



Single Shield: Pictured with (D) Weighted Base



Double Shield: Pictured with (A) "C" Clamps



Attachments Sold Separately

Splash Shields

Protects User with Smooth, Easy Position Adjustment

No matter how your workspace is configured, these Plexiglas® Splash Shields are designed to accommodate island and against-the-wall bench space as well as single and double work areas. They provide safety plus comfort (not hot and stuffy like personal face shields), flexibility (they're fully adjustable), and quality in a design that will adapt to your specific needs.

All shields move side-to-side as well as up and down at the touch of a finger. Free precious work space and enhance the performance of every user. Maximize room for hand motion when both sitting and standing. **After selecting desired shield, order appropriate mounting fixtures.**

CATALOG NO.	DESCRIPTION	RECOMMENDED MOUNTING FIXTURES	PRICE/EACH
F24966-0001	Single Plexiglas® Splash Shield 305 x 381mm (12 x 15") with 610mm (24") Reticulating Arm	Select type A, B, C, or D	\$169.95
F24966-0002	Single Plexiglas® Splash Shield 305 x 381mm (12 x 15") for Island Benches with 965mm (38") Reticulating Arm	Select type A, B, or C	235.00
F24966-0004	Double Plexiglas® Splash Shield 381 x 610mm (15 x 24") with two 610mm (24") Reticulating Arms	Select type A, B, or C must order two (one for each arm)	299.50
F24966-0003	Double Plexiglas® Splash Shield 381 x 610mm (15 x 24") for Island Benches with two 965mm (38") Reticulating Arms	Select type A, B, or C must order two (one for each arm)	320.00

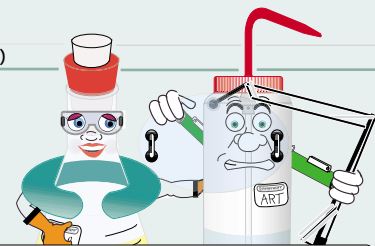
Mounting Fixtures: Refer to recommended mounting fixtures above. Choose the best mounting system for your work area.

F24966-0005	(A) "C" Clamp: Opens to 63mm (2 1/2"), order two (2) "C" Clamps for use with double shields	\$ 23.50
F24966-0006	(B) Fixed Table Bracket: Attaches permanently with screws to bench top, order two (2) Fixed Table Brackets for use with double shields	23.50
F24966-0007	(C) Wall Bracket: Attaches permanently to vertical surface with screws, Mount to wall studs only Order two Wall Brackets for use with double shields	23.50
F24966-0008	(D) Weighted Base: 22.8cm (9") Diameter Base, for use only with Single Splash Shield F24966-0001	90.00

Replacement Plexiglas® Shield

F24966-0010	Pre-Drilled Single Shield (for F24966-0001/0002)	44.85
F24966-0011	Pre-Drilled Double Shield (for F24966-0003/0004)	61.50

Polycarbonate shields are available to convert your splash shield into a safety shield, please call 1-800-4BEL-ART for details.



"You Forgot to Order the Attachment Brackets, Didn't You?!"

Flexible, Comfortable, Safe



Large Weighted Safety Shields

Highest Impact Resistance of All Transparent Shield Materials

Laboratory workers are protected by a 4.7mm (3/16") thick clear polycarbonate barrier. Three sided construction provides stability and protects personnel from front and sides against flying debris that may result from accidents. The heavy steel perimeter base is 25 x 48mm (1 x 1 7/8"), coated with blue epoxy. Plated steel bolts, nuts and washers are used for assembly. Outside base width is 50cm (19 1/2"), 17cm (6 1/2") front to back.



CATALOG NO.	HEIGHT	WEIGHT	PRICE/EACH
H24962-0000	76cm (30")	8.4kg (18.5lb)	\$265.50
H24964-0000	91cm (36")	8.9kg (19.6lb)	297.00

Splash Shield*

Splash Protection in Standing or Sitting Position

Provides excellent splash protection from pipetting or pouring procedures. An extra wide, angled viewing area and low bend allow the shield to be used from a standing or sitting position. Made from 6.4mm (1/4") clear acrylic with non-skid feet for stability. Acrylic base work area is 50.8 x 30.5cm (20 x 12") deep. Face is 50.9 x 38cm (20 x 15") high. Not recommended for Beta use.



CATALOG NO.	PRICE/EACH
F24965-0000	\$90.50

Custom Safety Shields Made to Order Call 1 800 4BEL-ART